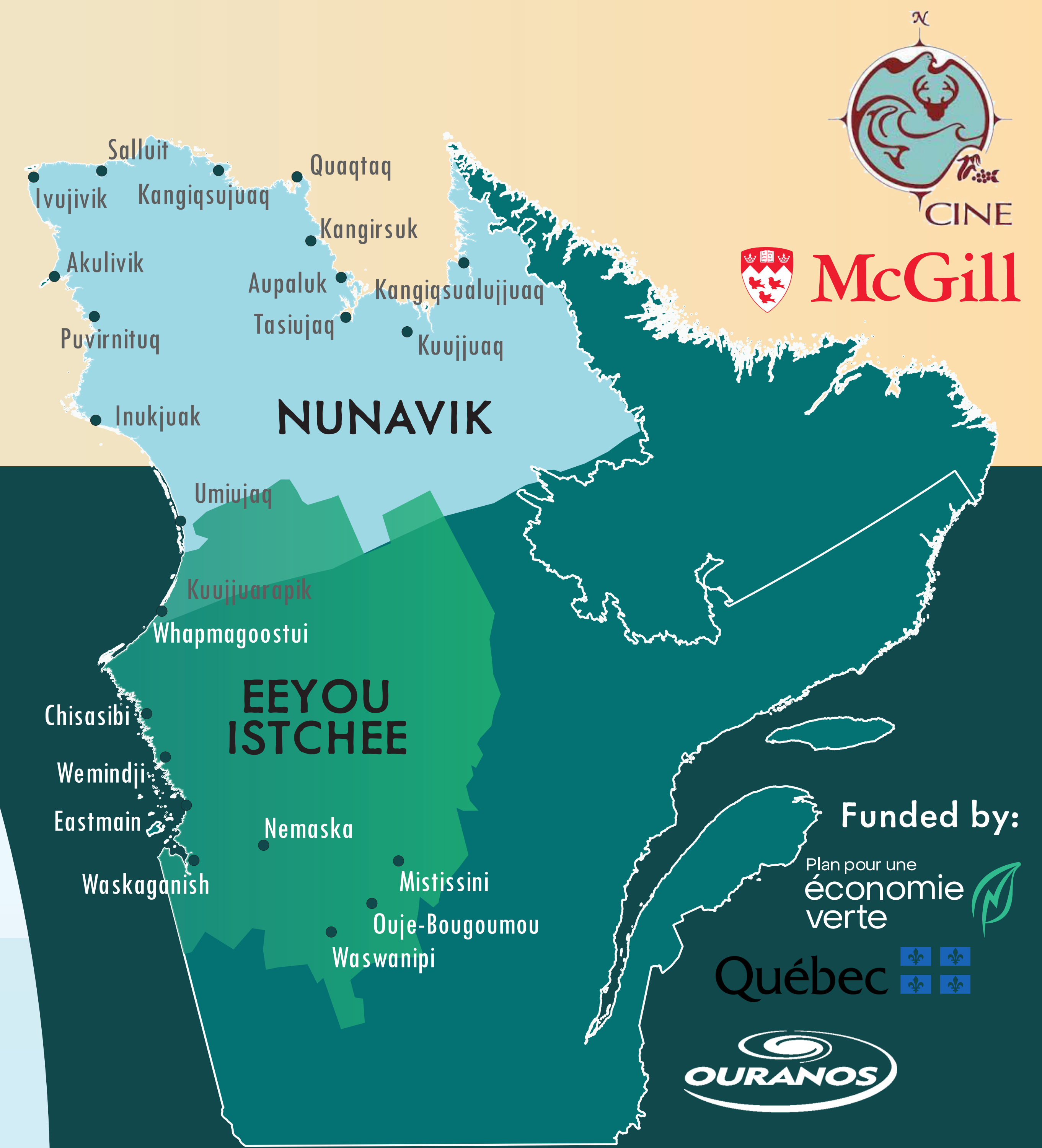


Wildlife, Environment Change, & Local Indigenous Food Systems (WECLIFS)

WECLIFS is a McGill-based research program led by Murray Humphries, the Northern Wildlife Knowledges Lab, and other collaborators, focused on the impacts of environmental change on local Indigenous food systems in northern Quebec



Observed & anticipated climate changes in northern Quebec include:

- Warmer temperatures & shorter winters
- Increase of unpredictable weather & storms

Scan here for northern Quebec climate profiles

Food security:

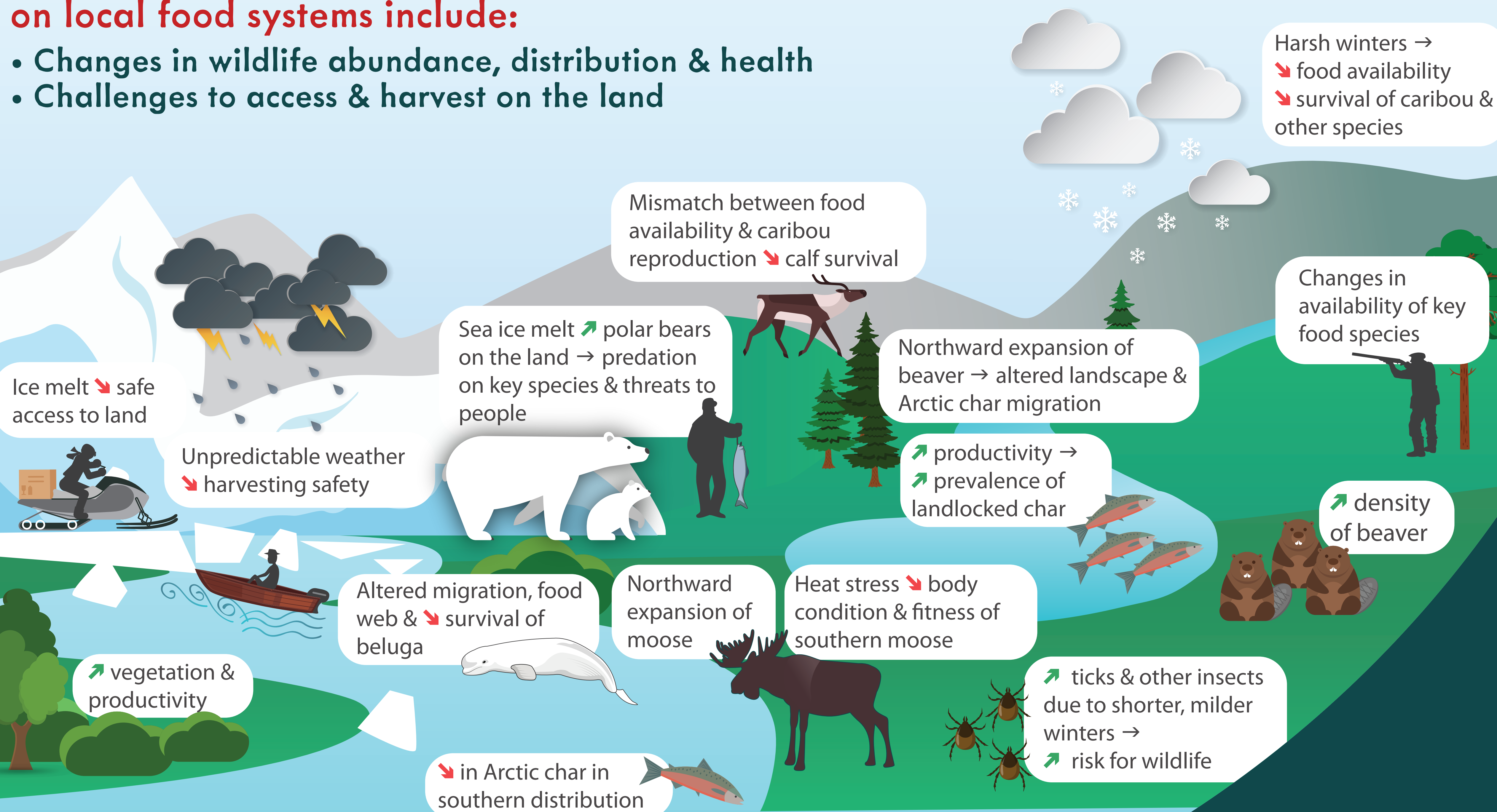
Is the food you like to eat available and accessible in the quantity and quality you want?

WECLIFS PHASE 1:

- Focused on the analysis of pre-existing data and the development of collaborative research approaches
- Examined **environmental impacts on key wildlife species**, the adaptive capacity of local food systems, and their contribution to food security, well-being, culture, and identity

Documented climate change impacts on local food systems include:

- Changes in wildlife abundance, distribution & health
- Challenges to access & harvest on the land



Scan here for information about WECLIFS phase 1

WECLIFS PHASE 2:

- Is called Knowledge to Action and is a transition from documenting & co-creating knowledge to developing actions to support local food system adaptation to climate change
- Focuses on **existing or potential adaptation strategies that are considered a priority to maintain, improve, and promote local food systems**

Adaptation can take multiple forms, including:

- Community-based monitoring
- Food production
- Policy, management, legislation & funding
- Improving wildlife habitat & safe land access
- Youth education
- Food sharing and production
- Traditional knowledge & practices
- Harvester support

We are interested in action-oriented initiatives to know:

- What works and doesn't work and why, based on existing initiatives?
- What's being done that could be accelerated, amplified, or extended?
- What's not being done that could be done?

What is our approach?

Continue to foster ethical, effective, and meaningful collaborations and knowledge co-production with organizations, communities and individuals in support of Indigenous self-determination in research

Some key Nunavik & Eeyou Istchee regional organizations:



Communities of Nunavik & Eeyou Istchee

Individuals in communities of Nunavik & Eeyou Istchee

Organizations Local, regional, provincial & federal

Research team CINE, McGill University

WECLIFS focuses on Nunavik and Eeyou Istchee but hopes to connect with other northern Quebec regions and communities
 Connect with us! weclifs.mcgill@gmail.com